

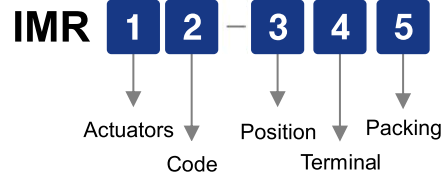
Mini Rotary Dip switches

IMR Series

7.4×7.4mm



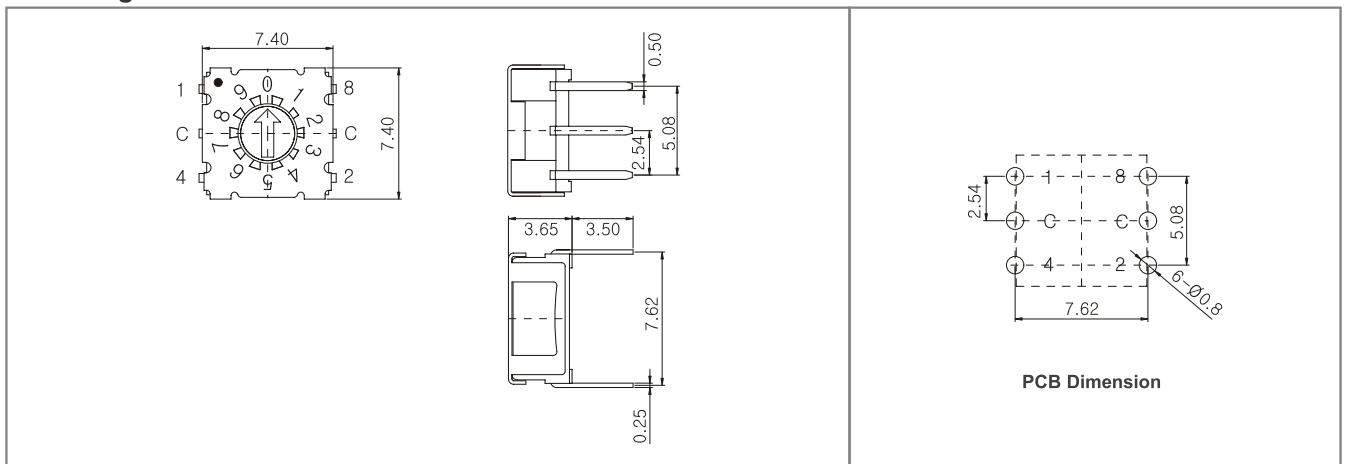
How To Order



Specifications :

Temperature range		-60°C to + 125°C
Electric performance	Rating	42V 100mA(switching), 400mA(none-switching)
	Contact resistance	80mΩ Max
	Insulation resistance	100MΩ Min
Mechanical	Operation force	120gf ±30gf
Durability	Life cycle	25,000 steps
Solder condition	Reflow soldering	10s / 260°C
	Iron soldering	4s / 350°C
	Wave soldering	5s / 280°C
Weather proof		IP67 (Dust & Water Proof)

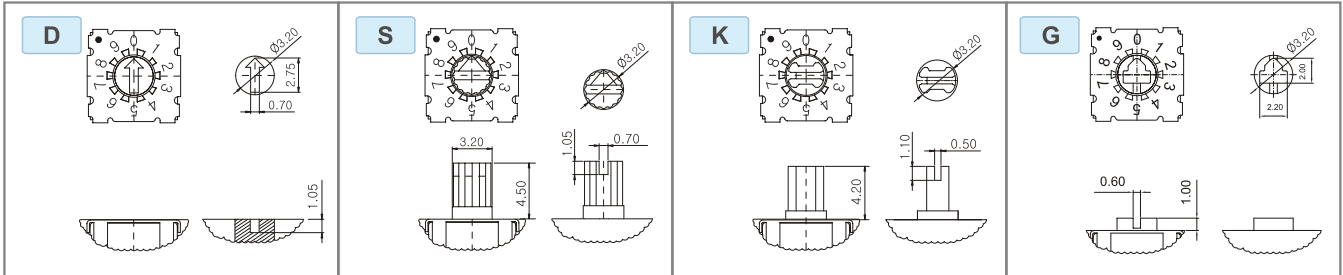
Drawing



Mini Rotary Dip switches

IMR Series 7.4×7.4mm

1 Actuators



2 Code

R Real Code

10 Position	Real Code				
	C	1	2	4	8
0	●				
1	●	●			
2	●		●		
3	●	●	●		
4	●			●	
5	●	●		●	
6	●		●	●	
7	●	●	●	●	
8	●				●
9	●	●			●

16 Position	Real Code					
	C	1	2	4	8	
0	●					0
1	●	●				1
2	●		●			2
3	●	●				3
4	●			●		4
5	●	●		●		5
6	●		●	●		6
7	●	●	●	●		7
8	●				●	8
9	●	●			●	9
10	●		●			A
11	●	●				B
12	●			●		C
13	●	●				D
14	●		●	●		E
15	●	●	●	●		F

C Complement Code

10 Position	Complement Code				
	C	1	2	4	8
0	●	●	●	●	●
1	●		●	●	●
2	●	●		●	●
3	●			●	●
4	●	●	●		●
5	●		●		●
6	●	●		●	●
7	●	●	●	●	●
8	●				●
9	●	●		●	●

16 Position	Complement Code					
	C	1	2	4	8	
0	●	●	●	●	●	0
1	●		●	●	●	1
2	●	●		●	●	2
3	●			●	●	3
4	●	●	●		●	4
5	●		●		●	5
6	●	●		●	●	6
7	●	●	●	●	●	7
8	●				●	8
9	●	●		●	●	9
10	●		●		●	A
11	●	●			●	B
12	●			●	●	C
13	●	●			●	D
14	●		●	●	●	E
15	●	●	●	●	●	F

G Gray Code

10 Position	Gray Code				
	C	1	2	4	8
0	●	●			●
1	●	●			
2	●		●		
3	●	●			
4	●			●	
5	●	●		●	
6	●		●	●	
7	●	●	●	●	
8	●				●
9	●	●			●

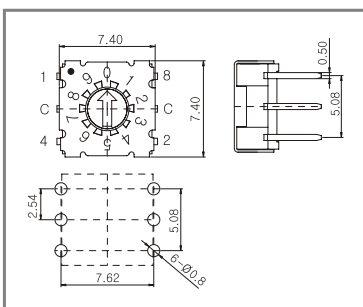
16 Position	Gray Code					
	C	1	2	4	8	
0	●					0
1	●	●				1
2	●		●			2
3	●	●				3
4	●			●		4
5	●	●		●		5
6	●		●	●		6
7	●	●	●	●		7
8	●				●	8
9	●	●			●	9
10	●		●		●	A
11	●	●			●	B
12	●			●	●	C
13	●	●			●	D
14	●		●	●	●	E
15	●	●	●	●	●	F

3 Position

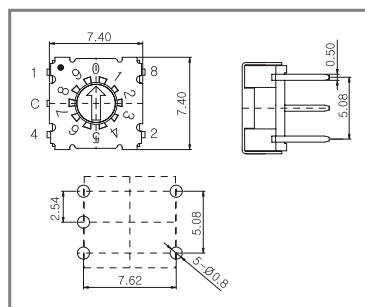


4 Terminals

S Standard type

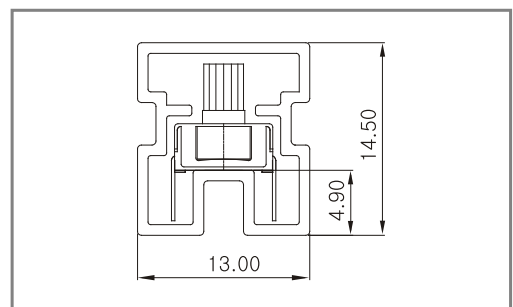


C (3×2 ter)



5 Packing

TB Tube packing Q'ty : 70 pcs / Tube



TACT Switches
PUSH Switches
HOOK Switches
DETECTOR Switches
SLIDE Switches
ROTARY Potentiometers
LEVER Switches
ROTARY Switches
CAPS