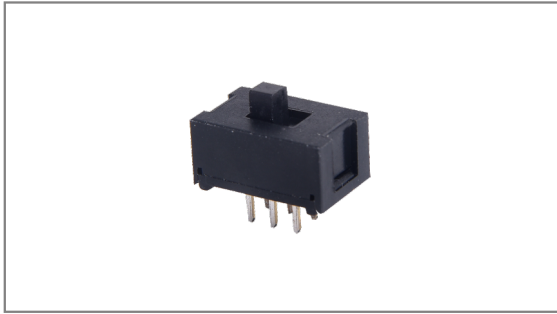


Slide switches

IMS-2214 11×7mm with 5.5mm Height, 2C 2P, Non specified, 2mm Travel, Through hole type



- **Features** : Subminiature slide switch for compact & high density design
- **Applications** : Computer & peripherals, Telecommunication, Consumer electronics, Instrumentation, Test & measurement
- **Specifications** :

Rating	DC 30V 300mA
Contact resistance	70mΩ Max.
Travel (mm)	2.0

► **Part list**

Part No.	Knob size (mm)		Operating force	Life	QTY per pack (Plastic bag)
	Length (mm)	□ (mm)			
IMS-2214	2.0	2.0×2.0	200±100gf	10,000 Cycles Min.	1K

► **Drawing**

Top view dimensions: 11.0±0.1, 2.0 TRAVEL, 7.0±0.1

Side view dimensions: 2, 2.0±0.2, 5.5±0.1, 2.8, 6±0.5, 2, 2

Cross-section dimensions: 2, 2.5, t:0.40

Circuit diagram: Shows a 2C 2P configuration with terminals 1, 2, 3, 4, 5, 6 and common terminals C.

PCB Dimension: Shows a 2x3 grid of holes with dimensions 2.0, 2.0, Ø0.70^{+0.1}₋₀, and 2.5.

- TACT Switches
- PUSH Switches
- HOOK Switches
- DETECTOR Switches
- SLIDE Switches**
- ROTARY Potentiometers
- LEVER Switches
- ROTARY Switches
- CAPS