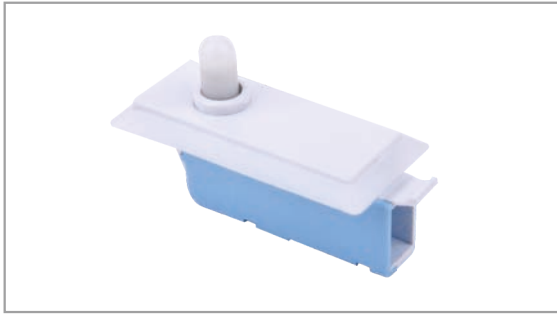


Door switches

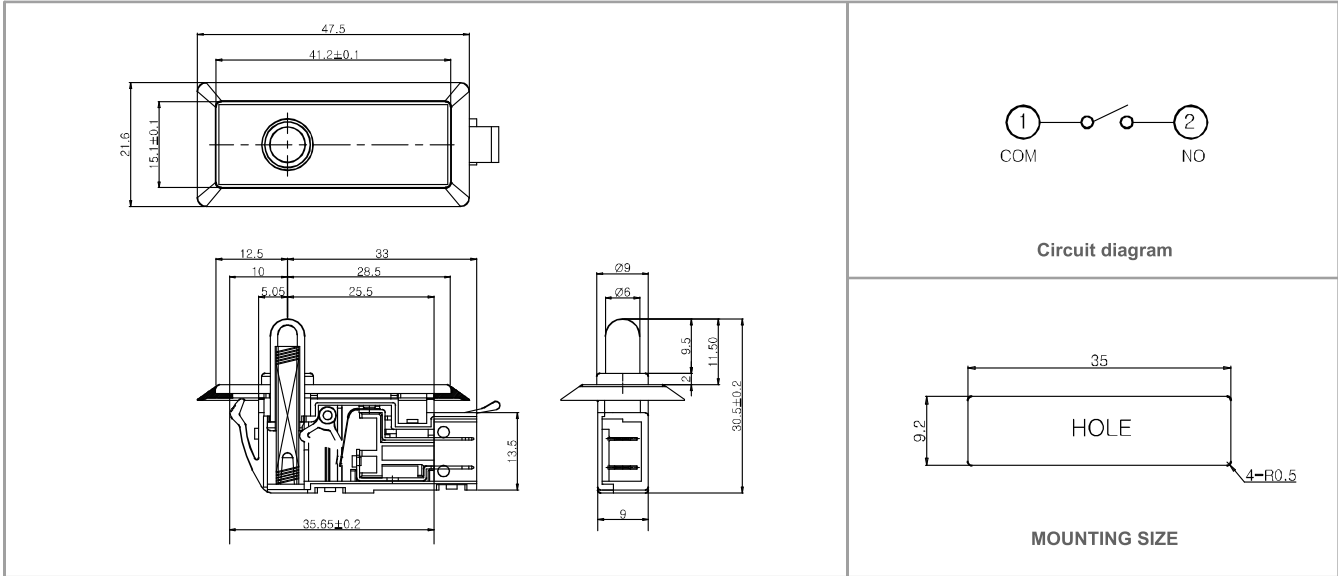
IDS-1111(NO)



- ▶ **Applications :** Washing machines
- ▶ **Specifications :**

Rating	AC 125V/1.5A, AC 250V/0.75A, DC 12V/ 0.1A
Contact resistance	100mΩ Max.
Insulation resistance	DC 500V, 100MΩ Min.
Dielectric strength	AC 1500V/1 Min.

▶ Drawing



TACT
Switches

PUSH
Switches

HOOK
Switches

DETECTOR
Switches

SLIDE
Switches

LEVER
Switches

ROTARY
Switches

ROTARY
Potentiometers

CAPS

DOOR
Switches