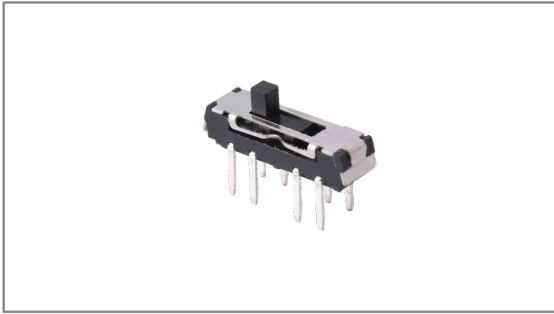


Slide switches

INS-2350B2015 13.0×3.6mm with 3.5mm Height, 2C 3P, Non shorting, 2mm Travel, Through hole type



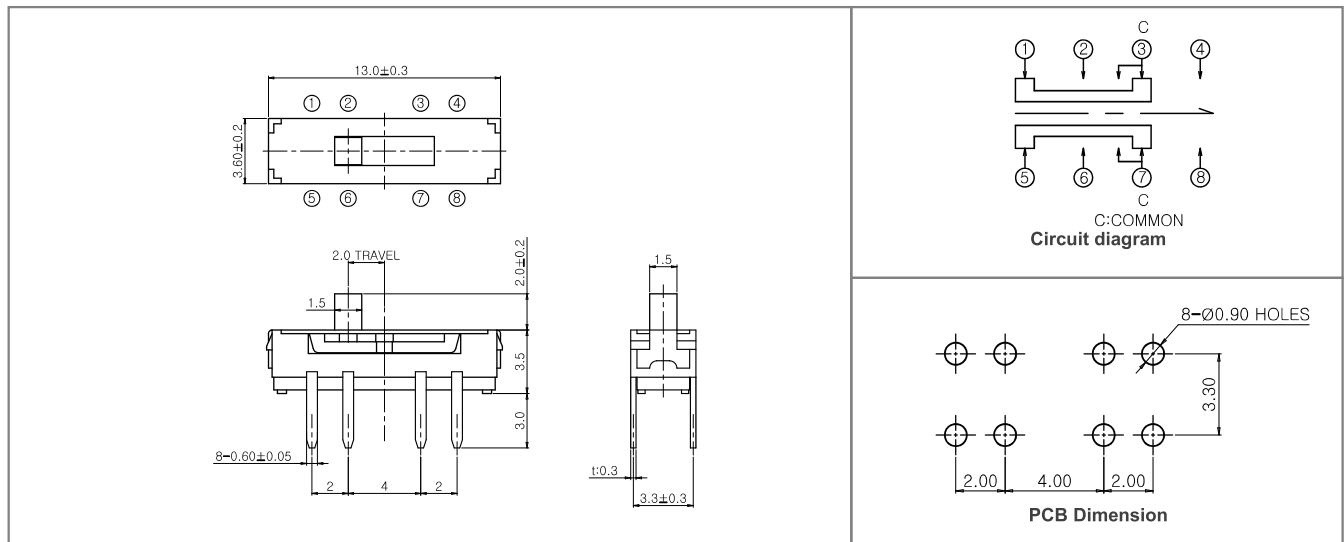
- **Features** : Subminiature slide switch for compact & high density design
- **Applications** : Computer & peripherals, Telecommunication, Consumer electronics, Instrumentation, Test & measurement
- **Specifications** :

Rating	DC 6V 0.3A
Contact resistance	70mΩ Max.
Travel (mm)	2.0

► Part list

Part No.	Knob size (mm)		Operating force	Life	QTY per pack (Plastic bag)	Remarks
	Length (mm)	□ (mm)				
INS-2350B2015	2.0	1.5×1.5	200±100gf	10,000 Cycles Min.	1K	without serration

► Drawing



TACT
Switches

PUSH
Switches

HOOK
Switches

DETECTOR
Switches

SLIDE
Switches

ROTARY
Potentiometers

LEVER
Switches

ROTARY
Switches

CAPS