

# Multi directional switches

## INT-1600U Series

7.5x7.5mm, 5 Directions, Surface mount type

**Features :** One touch, multi way switching,  
distinctive tactile feel for scanning and select functions

**Applications :** Electronic devices requiring direction control  
on LCD display, Remote Controllers, CCTV cameras,  
Digital cameras

**Specifications :**

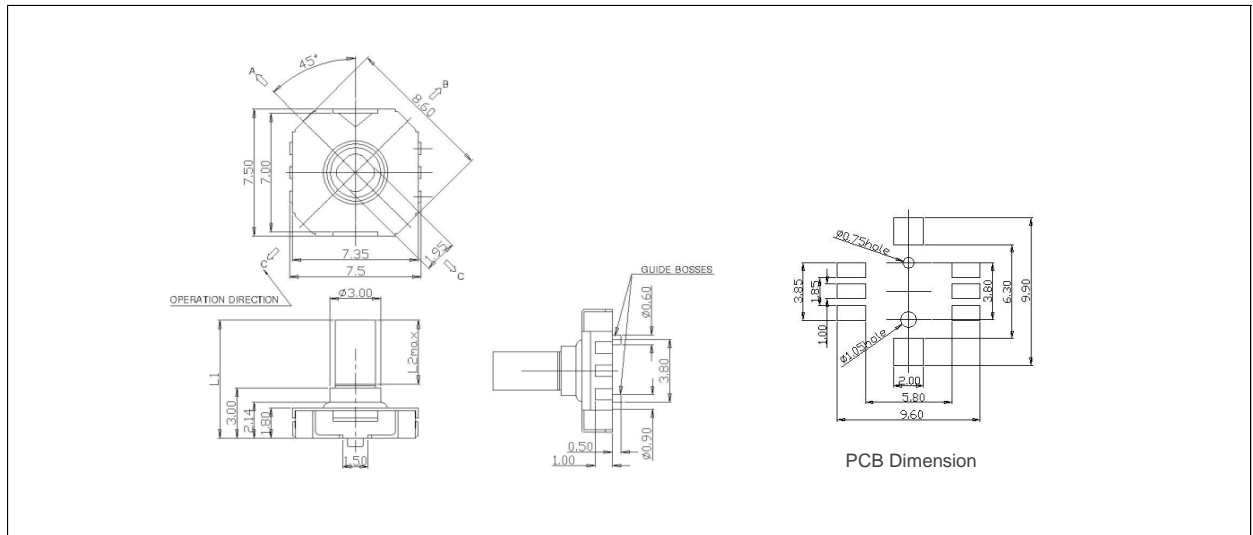
Rating	DC 12V 50mA
Contact resistance	500mΩ Max.
Travel (mm)	4 direction : 0.25 Center : 0.15



**Model list :**

Model No.	Length(mm)		Operating force		Life	QTY per pack (Tape & reel)	Remarks
	L1	L2	4 Direction	Center			
INT-1600U50B	5.0	1.7 max	160±50gf	260±70gf	100,000 Cycles Min.	1K	without guide bosses
INT-1600U70B	7.0	3.7 max					
INT-1600UE50B	5.0	1.7 max	160±50gf	260±70gf	100,000 Cycles Min.	1K	with guide bosses
INT-1600UE70B	7.0	3.7 max					

**Drawing :**



**Circuit diagram :**

