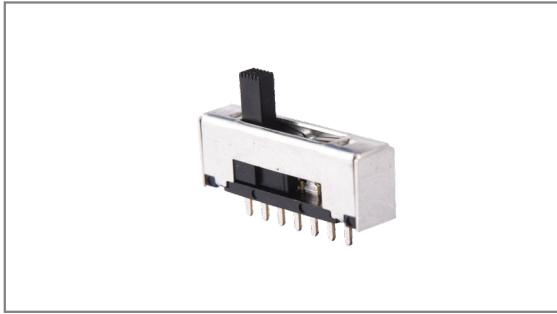


Slide switches

INS-1570 22×5mm with 7.5mm Height, 1C 5P, Non specified, 2.3mm Travel, Through hole type



- ▶ **Features :** Miniature slide switch for compact design
- ▶ **Applications :** Computer & peripherals, Telecommunication, Consumer electronics, Instrumentation, Test & measurement
- ▶ **Specifications :**

| | |
|--------------------|--------------|
| Rating | DC 30V 300mA |
| Contact resistance | 25mΩ Max. |
| Travel (mm) | 2.3 |

▶ **Part list**

| Part No. | Knob size (mm) | | Operating force | Life | QTY per pack (Plastic bag) |
|----------|----------------|---------|-----------------|--------------------|----------------------------|
| | Length (mm) | □ (mm) | | | |
| INS-1570 | 5.0 | 3.0×2.0 | 250±150gf | 10,000 Cycles Min. | 1K |

▶ **Drawing**

The drawing includes three views: a top view with dimensions (22.0, 5-2.3 TRAVEL, 2.3, 2.3, 2.3, 12.20, 5.0, 2.60), a side view with dimensions (3.0, 4.60, 5.0±0.2, 12.5, 7.50, 2.80, 7-Ø.60, 2.30, 2.30, 2.30, 2.30, 2.30, 2.30), and a front view with dimensions (2.0, 1.0, 40). To the right, a circuit diagram shows a common terminal (1) and five normally open terminals (2-6). Below it, the PCB dimension is shown as 7-Ø0.90^{+0.1}.

- TACT Switches
- PUSH Switches
- HOOK Switches
- DETECTOR Switches
- SLIDE Switches**
- ROTARY Potentiometers
- LEVER Switches
- ROTARY Switches
- CAPS