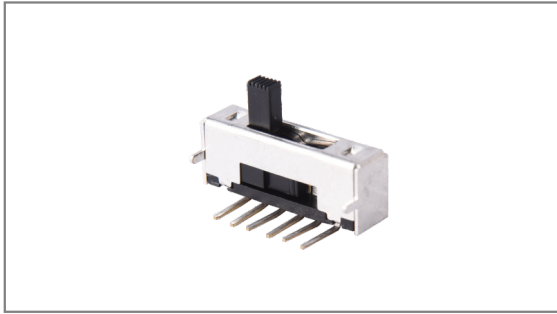


# Slide switches

**INS-1470R** 20×5mm with 7.5mm Height, 1C 4P, Non specified, 2.3mm Travel, Through hole type, Side Slide



- ▶ **Features :** Miniature slide switch for compact design
- ▶ **Applications :** Computer & peripherals, Telecommunication, Consumer electronics, Instrumentation, Test & measurement
- ▶ **Specifications :**

Rating	DC 30V 300mA
Contact resistance	25mΩ Max.
Travel (mm)	2.3

▶ **Part list**

Part No.	Knob size (mm)		Operating force	Life	QTY per pack (Plastic bag)
	Length (mm)	□ (mm)			
INS-1470R	5.0	3.0×2.0	250±150gf	10,000 Cycles Min.	1K

▶ **Drawing**

Top view dimensions: 20.0, 3=2.3 TRAVEL, 2.3, 2.3, 0.6, 9.9, 19.6±0.2, 10.40, 2.3, 5.0, 7.0, 3.0, 1.50.

Side view dimensions: 3.0, 3.45, 5.0±0.2, 12.5, 7.50, 1.50, 5-0.60, 2.30, 2.30, 2.30, 2.30, 2.30.

Cross-section dimensions: 10.40, 4.80, 4.0, 2.0, 1.0, 2.0.

**Circuit diagram**  
 Shows a slide switch with terminals 1, 2, 3, 4 and a common terminal (C). Terminal 1 is connected to C, and terminal 4 is connected to C. Terminals 2 and 3 are shown as separate outputs.

**PCB Dimension**  
 Shows the PCB layout with dimensions: 19.6, 4.8, 2-01.30<sup>+0.1</sup>, 6-20 00<sup>+0.1</sup>, 2.3, 2.3, 2.3, 2.3, 2.3.

- TACT Switches
- PUSH Switches
- HOOK Switches
- DETECTOR Switches
- SLIDE Switches**
- ROTARY Potentiometers
- LEVER Switches
- ROTARY Switches
- CAPS