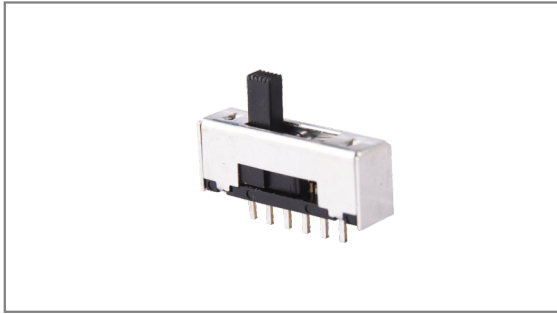


# Slide switches

**INS-1470** 20×5mm with 7.5mm Height, 1C 4P, Non specified, 2.3mm Travel, Through hole type



- **Features :** Miniature slide switch for compact design
- **Applications :** Computer & peripherals, Telecommunication, Consumer electronics, Instrumentation, Test & measurement
- **Specifications :**

Rating	DC 30V 300mA
Contact resistance	25mΩ Max.
Travel (mm)	2.3

► **Part list**

Part No.	Knob size (mm)		Operating force	Life	QTY per pack (Plastic bag)
	Length (mm)	□ (mm)			
INS-1470	5.0	3.0×2.0	250±150gf	10,000 Cycles Min.	1K

► **Drawing**

Top view dimensions: 20.0, 3-2.3 TRAVEL, 2.3, 2.3, 2.5, 5.0, 9.9

Side view dimensions: 3.0, 3.45, 5.0±0.2, 7.50, 12.5, 2.80, 6-0.60, 2.3, 2.3, 2.3, 2.3, 2.3

Detail view dimensions: 2.0, 10.40

© : COMMON

**Circuit diagram**

6-0.90<sup>+0.1</sup><sub>-0</sub>

2.3 2.3 2.3 2.3 2.3

**PCB Dimension**

- TACT Switches
- PUSH Switches
- HOOK Switches
- DETECTOR Switches
- SLIDE Switches**
- ROTARY Potentiometers
- LEVER Switches
- ROTARY Switches
- CAPS