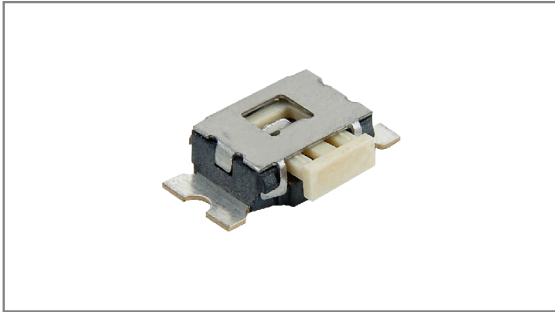


# Side Tact switches

**INT-1445F Series** 1.7mm Height, Dustproof, Surface mount type



- **Features** : Sealed contact ensures dust resistance.
- **Applications** : Smartphones, Other mobile devices, Consumer electronics
- **Specifications** :

|                    |             |
|--------------------|-------------|
| Rating             | DC 12V 50mA |
| Contact resistance | 100mΩ Max.  |
| Travel (mm)        | 0.3±0.1     |

## ► Part list

| Part No.     | Length (mm) | Operating force | Life                | QTY per pack (Tape & reel) |
|--------------|-------------|-----------------|---------------------|----------------------------|
| INT-1445F44A | 4.4         | 220±70gf        | 100,000 Cycles Min. | 3K                         |

## ► Drawing

Top view dimensions: 7.0±0.2, 4.7±0.1, 2.50, 4.4, 3.5, 3.1, 3.8, 2.6, 1.70±0.2, 7.6, 7.0, 4.40, 2.65, 0.27, 4.17, 0.27, 1.1±0.1, 2.65, 0.40, 1.1.

**Circuit diagram**

**PCB Dimension**

Dimensions: 7.6, 4.17, 3.8, 2.65, 2.60