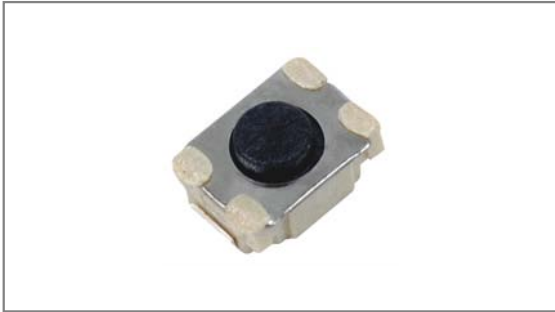


Subminiature Tact switches

INT-1440U Series 3.9×3.0mm with 2.0 & 2.5mm length, Surface mount type



- **Features** : Subminiature design
- **Applications** : Smartphones, Other mobile devices, Consumer electronics
- **Specifications** :

Rating	DC 12V 50mA
Contact resistance	100mΩ Max.
Travel (mm)	0.15±0.1

► Part list

Part No.	Length (mm)	Operating force	Life	QTY per pack (Tape & reel)	Remarks
INT-1440U20A	2.0	160±50gf	50,000 Cycles Min.	3K	without guide bosses
INT-1440U25A	2.5	250±50gf			
INT-1440U20B	2.0				
INT-1440U25B	2.5				
INT-1440UE20A	2.0	160±50gf			with guide bosses
INT-1440UE25A	2.5	250±50gf			
INT-1440UE20B	2.0				
INT-1440UE25B	2.5				

► Drawing

Without guide bosses	
	<p>Circuit diagram</p>
	<p>PCB Dimension</p>
With guide bosses	
	<p>Circuit diagram</p>
	<p>PCB Dimension</p>