

# Dustproof switches

**INT-1430UR Series** 4.7×3.5mm with 2.5mm length, Surface mount type, Rubber stem



► **Features** : Subminiature design & Rubber stem provides soft feeling

► **Applications** : PC & Peripherals, Car AV equipments, Automobile, Communications devices

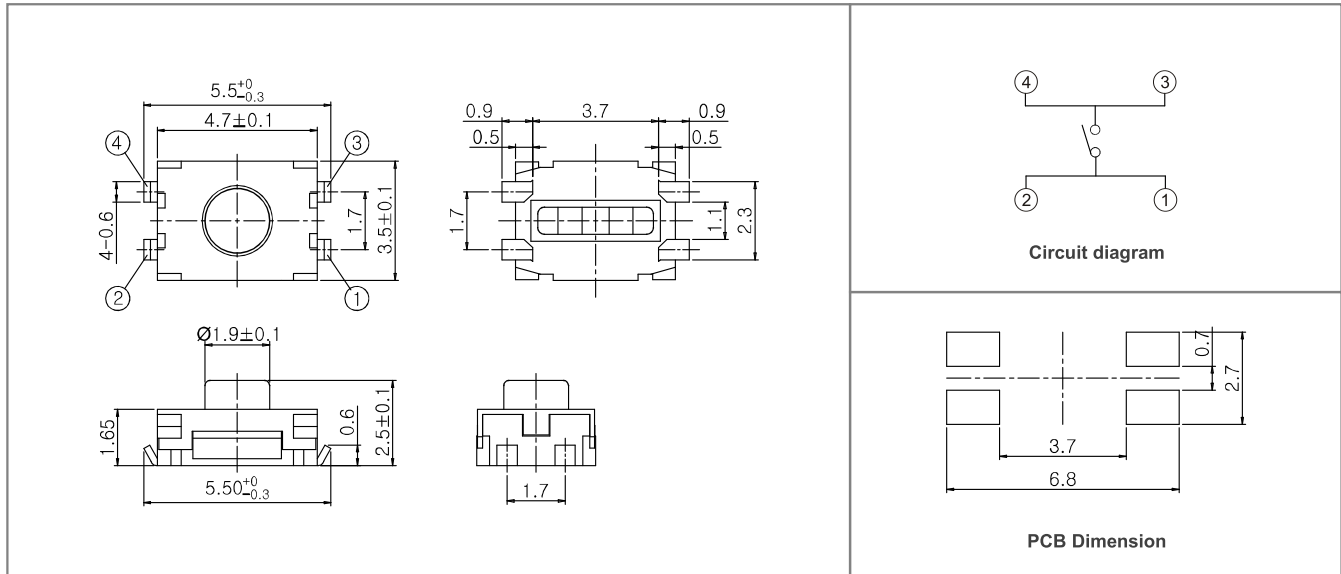
► **Specifications** :

Rating	DC 12V 50mA
Contact resistance	100mΩ Max.
Travel (mm)	0.2±0.1

## ► Part list

Part No.	Length (mm)	Operating force	Life	QTY per pack (Tape & reel)
INT-1430UR25A	2.5	160±50gf	100,000 Cycles Min.	3K
INT-1430UR25B		250±50gf		

## ► Drawing



TACT Switches

PUSH Switches

HOOK Switches

DETECTOR Switches

SLIDE Switches

ROTARY Potentiometers

LEVER Switches

ROTARY Switches

CAPS