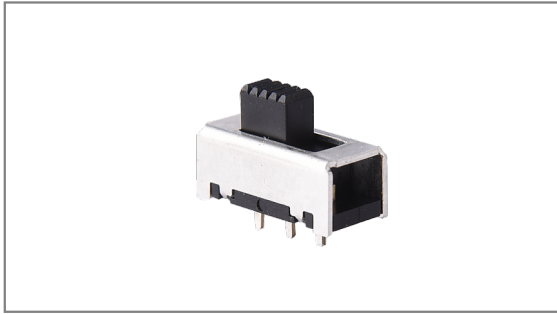


# Slide switches

**INS-12814** 14×6.2mm with 5.5mm Height, 1C 2P, Non specified, 3.2mm Travel, Through hole type



- **Features :** Miniature slide switch for compact design
- **Applications :** Computer & peripherals, Telecommunication, Consumer electronics, Instrumentation, Test & measurement
- **Specifications :**

Rating	DC 30V 300mA
Contact resistance	25mΩ Max.
Travel (mm)	3.2

► **Part list**

Part No.	Knob size (mm)		Operating force	Life	QTY per pack (Plastic bag)
	Length (mm)	□ (mm)			
INS-12814	4.0	5.0×3.0	250±150gf	10,000 Cycles Min.	1K

► **Drawing**

Top view dimensions: 14.0 (total length), 1.9 (knob width), 1.3 (knob offset), 6.2 (height), 3.2 TRAVEL (travel distance).

Side view dimensions: 5.0 (knob length), 1.9 (knob width), 4.0±0.2 (height to top of knob), 9.5 (total height), 5.5 (height to top of body), 2.6 (height to bottom of body), 3-0.6 (pitch), 3.2 (pitch), 3.2 (pitch).

Cross-sectional view dimensions: 3.0 (knob width), 1±0.4 (height to bottom of knob).

**Circuit diagram:** Shows three terminals labeled 1, 2, and 3. Terminal 2 is labeled 'C' for common. Terminal 1 is connected to terminal 2, and terminal 3 is connected to terminal 2.

**PCB Dimension:** Shows three circular pads with a diameter of  $\varnothing 0.90^{+0.1}_0$ . The distance between the centers of the pads is 3.2 mm.

- TACT Switches
- PUSH Switches
- HOOK Switches
- DETECTOR Switches
- SLIDE Switches**
- ROTARY Potentiometers
- LEVER Switches
- ROTARY Switches
- CAPS