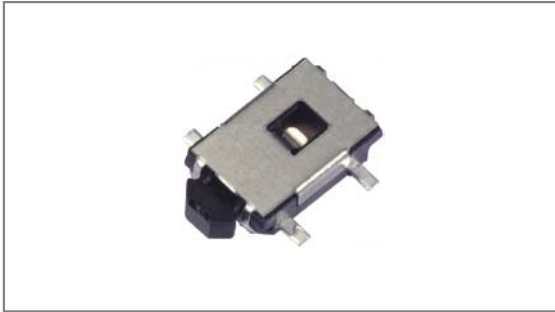


Side Tact switches

INT-1200FE Series 1.8mm Height, Dustproof, Surface mount type with Guide bosses



- ▶ **Features** : Sealed contact ensures dust resistance.
- ▶ **Applications** : Smartphones, Other mobile devices, Consumer electronics
- ▶ **Specifications** :

Rating	DC 12V 50mA
Contact resistance	100mΩ Max.
Travel (mm)	0.3±0.1

▶ Part list

Part No.	Length (mm)	Operating force	Life	QTY per pack (Tape & reel)
INT-1200FE74A	7.4	220±50gf	50,000 Cycles Min.	2K

▶ Drawing

