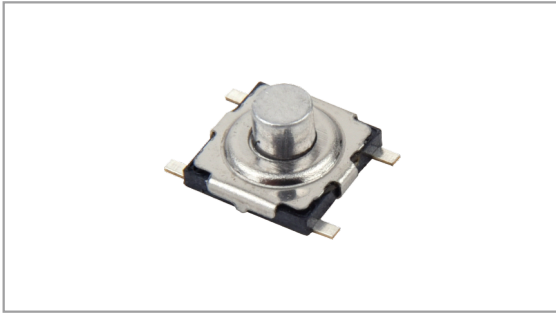


Low Profile SMT Tact switches

INT-1187FA Series

5.0×5.0mm with 2.7mm length, Aluminum Stem, Dustproof, Surface mount type

- TACT Switches
- PUSH Switches
- HOOK Switches
- DETECTOR Switches
- SLIDE Switches
- LEVER Switches
- ROTARY Switches
- ROTARY Potentiometers
- CAPS



- **Features** : Low profile & Compact design
- **Applications** : Consumer electronics, Computer devices, Home appliances, Audio-visual equipments
- **Specifications** :

Rating	DC 12V 50mA
Contact resistance	100mΩ Max.
Travel (mm)	0.25±0.1

► Part list

Part No.	Length (mm)	Operating force	Life	QTY per pack (Tape & reel)
INT-1187FA27A	2.7	200±50gf	100,000 Cycles Min.	2.5K
INT-1187FA27B		250±70gf		

► Drawing

Circuit diagram

PCB Dimension