

Waterproof switches

INT-1169S Series

6.2x6.2mm, Ø2.9mm Large stem, Metal cover, Surface mount type

Features : IP67 dust & water resistance

Applications : Home appliances or Industrial equipments used around water

Specifications :

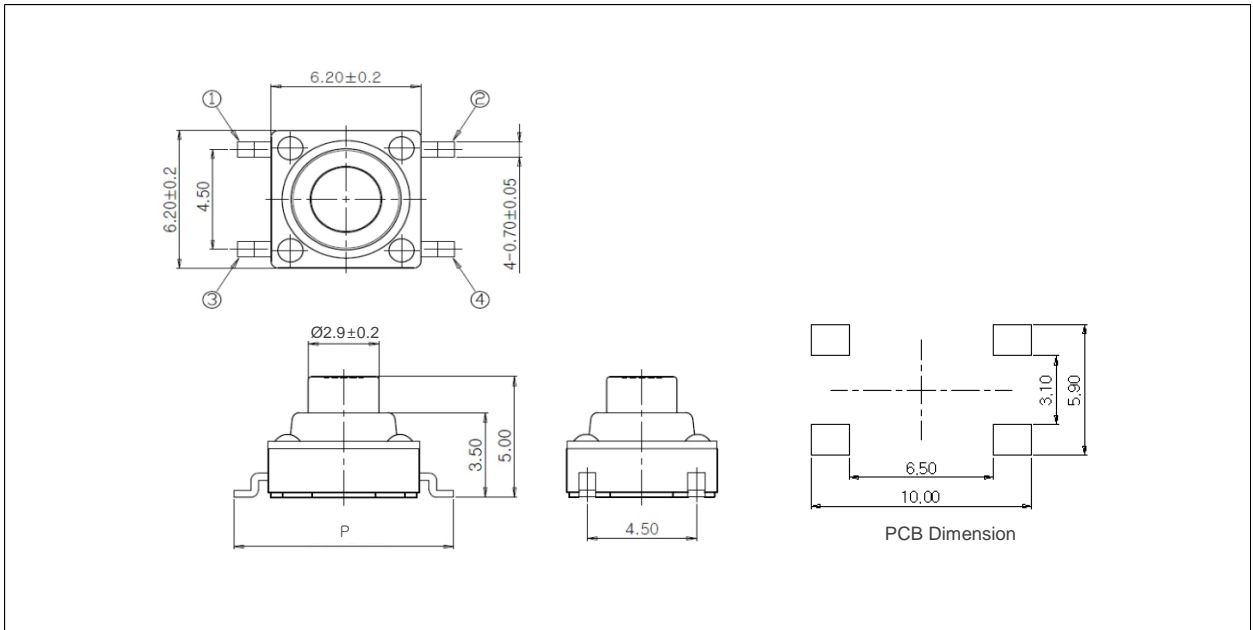
Rating	DC 12V 50mA
Contact resistance	100mΩ Max.
Travel (mm)	0.3±0.1



Model list :

Model No.	Length (mm)	Operating force	Pitch (mm)	Life	QTY per pack (Tape & reel)
INT-1169S43AP	4.3	200±50gf	9.0	100,000 Cycles Min.	1K
INT-1169S50AP	5.0				750
INT-1169S70AP	7.0				750
INT-1169S43BP	4.3	250±70gf	9.0		1K
INT-1169S50BP	5.0				750
INT-1169S70BP	7.0				750
INT-1169S43AQ	4.3	200±50gf	10		1K
INT-1169S50AQ	5.0				750
INT-1169S70AQ	7.0				750
INT-1169S43BQ	4.3	250±70gf	10		1K
INT-1169S50BQ	5.0				750
INT-1169S70BQ	7.0				750

Drawing :



Circuit diagram :

