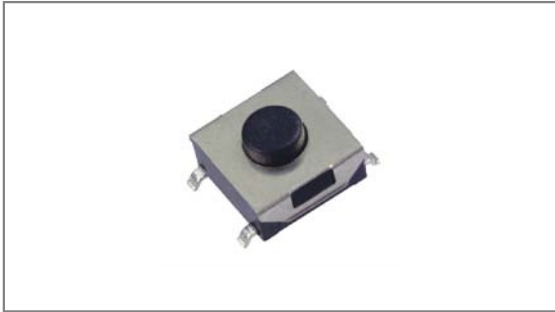


SMT Tact switches

INT-1157S Series 6.2×6.5mm with 2.0mm high case, Surface mount type



- ▶ **Features** : Suitable for variety of controls
- ▶ **Applications** : Audio, TV, Communication devices, Operating switches for all kinds of electronic equipments
- ▶ **Specifications** :

Rating	DC 12V 50mA
Contact resistance	100mΩ Max.
Travel (mm)	0.25±0.1

▶ Part list

Part No.	Length (mm)	Operating force	Pitch (mm)	Life	QTY per pack (Tape & reel)
INT-1157S25AO	2.5	160±50gf	8.0	100,000 Cycles Min.	1.5K (1.7K)
INT-1157S31AO	3.1				
INT-1157S37AO	3.7				
INT-1157S25BO	2.5	250±50gf			
INT-1157S31BO	3.1				
INT-1157S37BO	3.7				
INT-1157S25AP	2.5	160±50gf	9.0		
INT-1157S31AP	3.1				
INT-1157S37AP	3.7				
INT-1157S25BP	2.5	250±50gf			
INT-1157S31BP	3.1				
INT-1157S37BP	3.7				

* Long life (1KK cycles) is available and part numbers in long life change to INT-1157S25AOL / INT-1157S25APL~ INT-1157S37AOL / INT-1157S37APL.

▶ Drawing

