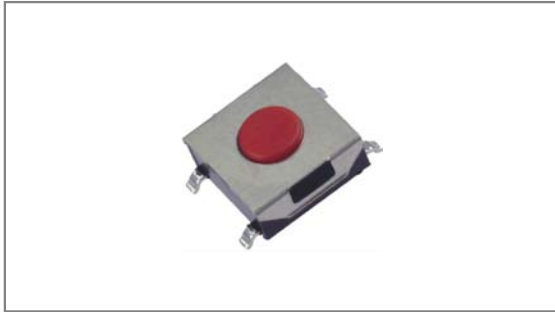


SMT Tact switches

INT-1157A Series 6.2×6.5mm with 2.6mm high case, Surface mount type



- ▶ **Features** : Suitable for variety of controls
- ▶ **Applications** : Audio, TV, Communication devices, Operating switches for all kinds of electronic equipments
- ▶ **Specifications** :

| | |
|--------------------|-------------|
| Rating | DC 12V 50mA |
| Contact resistance | 100mΩ Max. |
| Travel (mm) | 0.25±0.1 |

▶ Part list

| Part No. | Length (mm) | Operating force | Pitch (mm) | Life | QTY per pack (Tape & reel) | | |
|---------------|-------------|-----------------|------------|---------------------|----------------------------|---------------------|----------------|
| INT-1157A29AO | 2.9 | 160±50gf | 8.0 | 100,000 Cycles Min. | 1.5K (1.7K) | | |
| INT-1157A31AO | 3.1 | | | | | | |
| INT-1157A34AO | 3.4 | | | | | | |
| INT-1157A43AO | 4.3 | | | | | | |
| INT-1157A29BO | 2.9 | 250±50gf | 8.0 | | 100,000 Cycles Min. | 1K | |
| INT-1157A31BO | 3.1 | | | | | | |
| INT-1157A34BO | 3.4 | | | | | | |
| INT-1157A43BO | 4.3 | | | | | | |
| INT-1157A29AQ | 2.9 | 160±50gf | 10.0 | | | 100,000 Cycles Min. | 1.5K (1.7K) |
| INT-1157A31AQ | 3.1 | | | | | | |
| INT-1157A34AQ | 3.4 | | | | | | |
| INT-1157A43AQ | 4.3 | | | | | | |
| INT-1157A29BQ | 2.9 | 250±50gf | 10.0 | 100,000 Cycles Min. | | | 1K |
| INT-1157A31BQ | 3.1 | | | | | | |
| INT-1157A34BQ | 3.4 | | | | | | |
| INT-1157A43BQ | 4.3 | | | | | | |

* Long life (1KK cycles) is available and part numbers in long life change to INT-1157A29AOL / INT-1157A29AQL~ INT-1157A43AOL / INT-1157A43AQL.

▶ Drawing

