

Waterproof switches

INT-1149BM Series

10x10mm, Metal cover, Through hole type

Features : IP67 dust & water resistance

Applications : Home appliances or Industrial equipments used around water

Specifications :

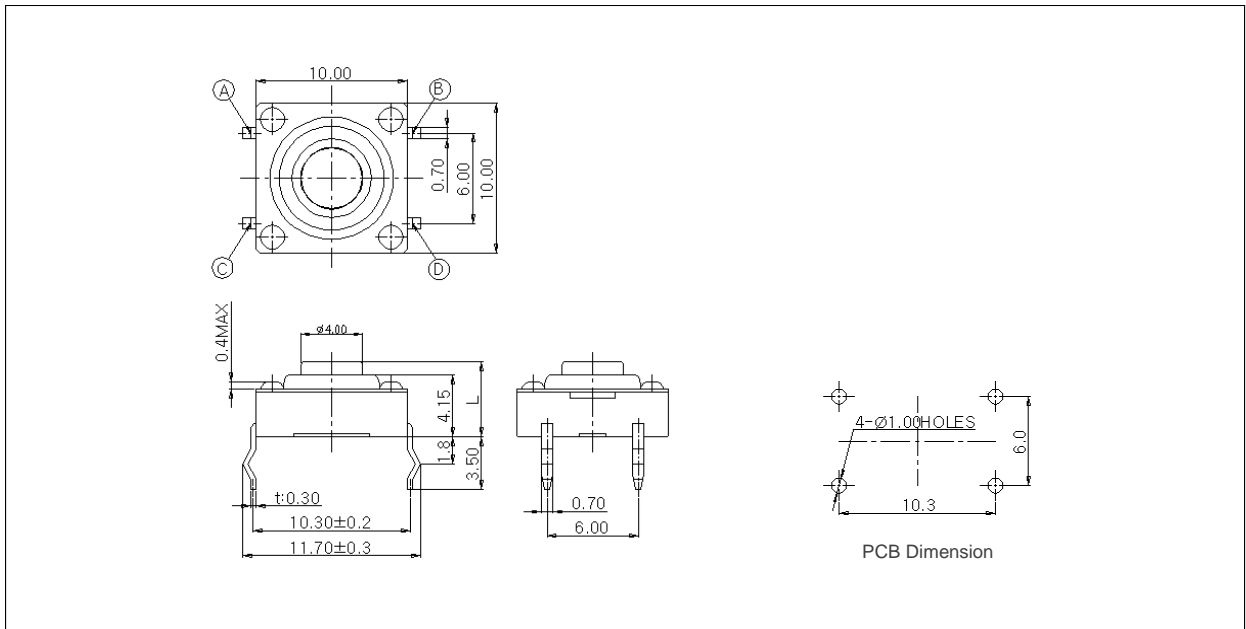
Rating	DC 12V 50mA
Contact resistance	500mΩ Max.
Travel (mm)	0.3±0.1



Model list :

Model No.	Length (mm)	Operating force	Life	QTY per pack (Plastic bag)
INT-1149BM50A	5.0	200±50gf	100,000 Cycles Min.	2K
INT-1149BM50B		250±50gf		

Drawing :



Circuit diagram :

