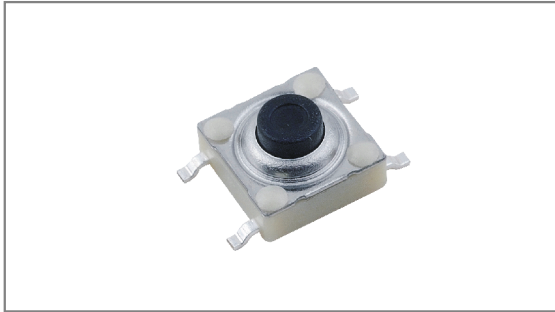


Waterproof switches

INT-1136S Series 6.2×6.2mm, Ø 2.9mm Stem, Metal cover, Surface mount type, Terminal spacing of 4.0mm



- ▶ **Features** : IP67 dust & water resistance
- ▶ **Applications** : Home appliances or Industrial equipments used around water
- ▶ **Specifications** :

Rating	DC 12V 50mA
Contact resistance	100mΩ Max.
Travel (mm)	0.3±0.1

▶ Part list

Part No.	Length (mm)	Operating force	Pitch (mm)	Life	QTY per pack (Tape & reel)		
INT-1136S31AP	3.1	200±50gf	9.0	350,000 Cycles Min.	1.6K		
INT-1136S35AP	3.5						
INT-1136S43AP	4.3						
INT-1136S50AP	5.0						
INT-1136S95AP	9.5						
INT-1136S31BP	3.1	300±70gf			9.0	350,000 Cycles Min.	1.6K
INT-1136S35BP	3.5						
INT-1136S43BP	4.3						
INT-1136S50BP	5.0						
INT-1136S95BP	9.5						

▶ Drawing

Terminal spacing of 4.0mm

Top view dimensions: 6.2±0.1 (width), 6.2±0.1 (height), 4.0 (terminal spacing), 4-0.7 (terminal offset).

Side view dimensions: 0.5 MAX (height), Ø2.9±0.2 (stem diameter), 2.55 (height), L±0.2 (height), 9.0±0.2 (width).

Bottom view dimension: 4.0 (terminal spacing).

Circuit diagram

PCB Dimension

PCB dimensions: 6.50 (width), 10.60 (width), 2.60 (height), 5.40 (height).