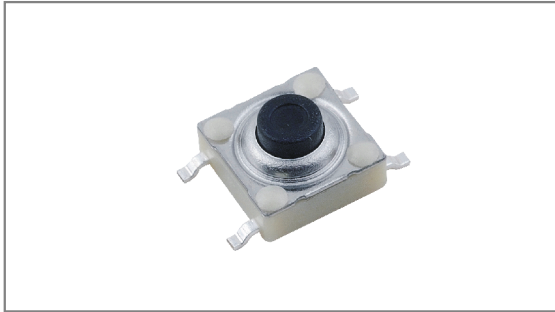


# Waterproof switches

**INT-1134S Series** 6.2×6.2mm, Ø2.9mm Stem, Metal cover, Surface mount type, Terminal spacing of 4.5mm



- **Features** : IP67 dust & water resistance
- **Applications** : Home appliances or Industrial equipments used around water
- **Specifications** :

Rating	DC 12V 50mA
Contact resistance	100mΩ Max.
Travel (mm)	0.3±0.1

## ► Part list

Part No.	Length (mm)	Operating force	Pitch (mm)	Life	QTY per pack (Tape & reel)
INT-1134S31AP	3.1	200±50gf	9.0	350,000 Cycles Min.	1.6K
INT-1134S35AP	3.5				1K
INT-1134S43AP	4.3				500
INT-1134S50AP	5.0				1.6K
INT-1134S95AP	9.5				1K
INT-1134S31BP	3.1	300±70gf	9.0	350,000 Cycles Min.	500
INT-1134S35BP	3.5				1.6K
INT-1134S43BP	4.3				1K
INT-1134S50BP	5.0				500
INT-1134S95BP	9.5				500

## ► Drawing

Terminal spacing of 4.5mm

Top view dimensions: 6.2±0.1 (width), 6.2±0.1 (height), 4±0.7 (terminal offset), 4.5 (terminal spacing).  
 Side view dimensions: 0.5 MAX (height), Ø2.9±0.2 (stem diameter), 2.0 (base width), 2.55 (base height), L±0.2 (total height), (P) 9.0±0.2 (pitch).  
 Front view dimension: 4.5 (terminal spacing).

**Circuit diagram**

**PCB Dimension**

TACT Switches

PUSH Switches

HOOK Switches

DETECTOR Switches

SLIDE Switches

ROTARY Potentiometers

LEVER Switches

ROTARY Switches

CAPS