

Waterproof switches

INT-1129PM Series 6.2×6.2mm, Ø2.2mm Stem, Metal cover, Radial type



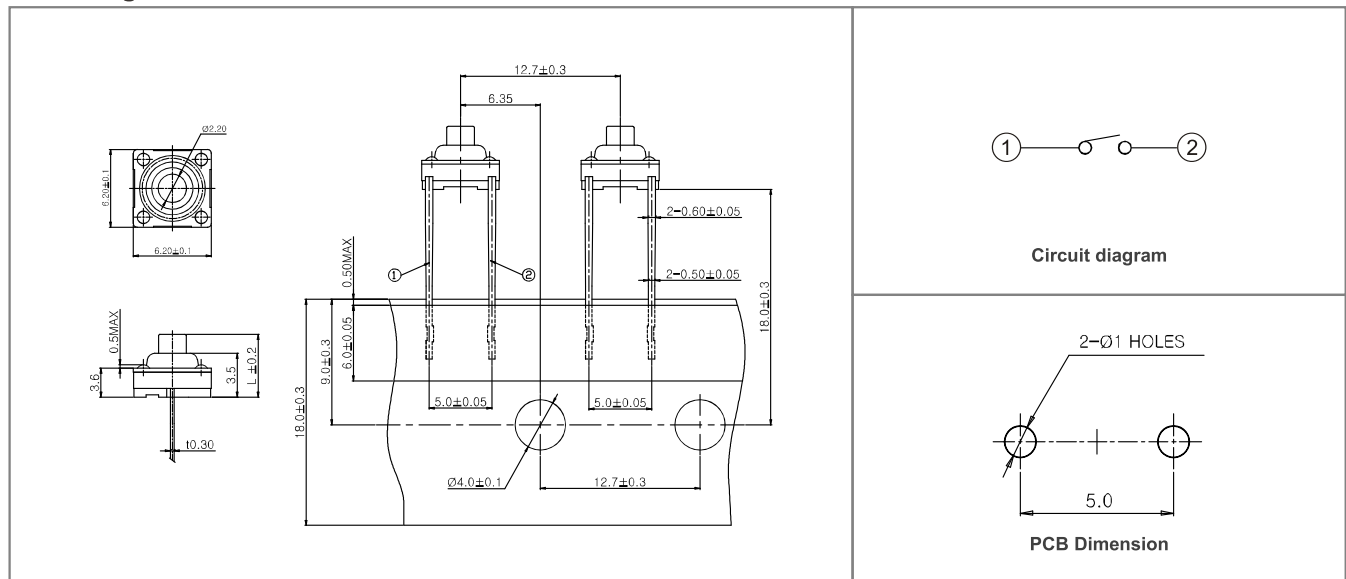
- **Features** : IP67 dust & water resistance
- **Applications** : Home appliances or Industrial equipments used around water
- **Specifications** :

Rating	DC 12V 50mA
Contact resistance	100mΩ Max.
Travel (mm)	0.3±0.1

► Part list

Part No.	Length (mm)	Operating force	Life	QTY per pack (Tape)
INT-1129PM43A	4.3	200±50gf	100,000 Cycles Min.	1K
INT-1129PM50A	5.0			
INT-1129PM69A	6.9			
INT-1129PM70A	7.0			
INT-1129PM80A	8.0			

► Drawing



TACT Switches

PUSH Switches

HOOK Switches

DETECTOR Switches

SLIDE Switches

ROTARY Potentiometers

LEVER Switches

ROTARY Switches

CAPS