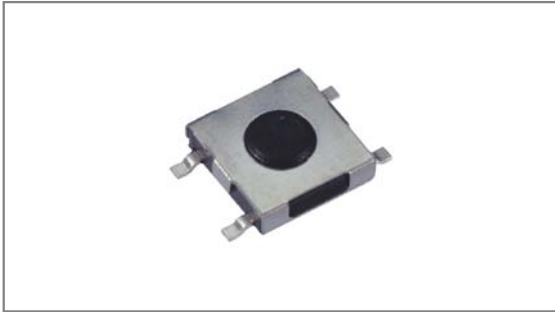


Subminiature Tact switches

INT-1127S Series 4.5×4.5mm, Surface mount type



- **Features** : Subminiature design, Suitable for variety of controls
- **Applications** : Operating switches for all kinds of electronic equipments
- **Specifications** :

Rating	DC 12V 50mA
Contact resistance	100mΩ Max.
Travel (mm)	0.2±0.1

► **Part list**

Part No.		Length (mm)	Operating force	Pitch (mm)		Life	QTY per pack (Tape & reel)	Remarks			
				P	Q						
INT-1127S15AP	INT-1127S15AQ	1.5	160±50gf	3.0	3.5	100,000 Cycles Min.	4K	without guide bosses			
INT-1127S27AP	INT-1127S27AQ	2.7					3K				
INT-1127S43AP	INT-1127S43AQ	4.3					2K				
INT-1127S15BP	INT-1127S15BQ	1.5	4K								
INT-1127S27BP	INT-1127S27BQ	2.7	3K								
INT-1127S43BP	INT-1127S43BQ	4.3	2K								
INT-1127SE15AP	INT-1127SE15AQ	1.5	160±50gf				3.0	3.5	100,000 Cycles Min.	4K	with guide bosses
INT-1127SE27AP	INT-1127SE27AQ	2.7								3K	
INT-1127SE43AP	INT-1127SE43AQ	4.3								2K	
INT-1127SE15BP	INT-1127SE15BQ	1.5	4K								
INT-1127SE27BP	INT-1127SE27BQ	2.7	3K								
INT-1127SE43BP	INT-1127SE43BQ	4.3	2K								
			250±50gf	3.0	3.5	100,000 Cycles Min.					

► **Drawing**

Without guide bosses	With guide bosses
	<p>Circuit diagram</p>
	<p>Circuit diagram</p>
	<p>PCB Dimension</p>
	<p>PCB Dimension</p>

TACT Switches
 PUSH Switches
 HOOK Switches
 DETECTOR Switches
 SLIDE Switches
 ROTARY Potentiometers
 LEVER Switches
 ROTARY Switches
 CAPS