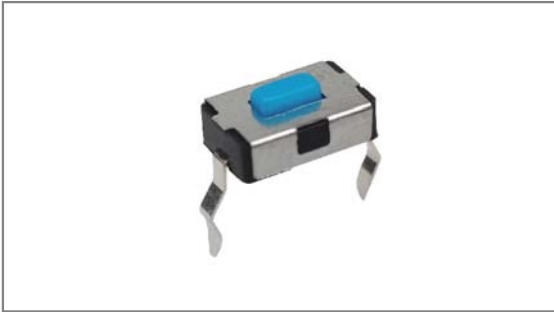


Subminiature Tact switches

INT-1107B Series 6.1×4mm with 2.5mm length, Through hole type

- TACT Switches
- PUSH Switches
- HOOK Switches
- DETECTOR Switches
- SLIDE Switches
- ROTARY Potentiometers
- LEVER Switches
- ROTARY Switches
- CAPS



- ▶ **Features** : Operating switches for all kinds of electronic equipments
- ▶ **Applications** : Consumer electronics, Computer devices, Home appliances, Audio-visual equipments
- ▶ **Specifications** :

Rating	DC 12V 50mA
Contact resistance	100mΩ Max.
Travel (mm)	0.25±0.1

▶ **Part list**

Part No.	Length (mm)	Operating force	Life	QTY per pack (Plastic bag)
INT-1107B25A	2.5	180±50gf	50,000 Cycles Min.	2K
INT-1107B25B		250±50gf	30,000 Cycles Min.	

▶ **Drawing**

Circuit diagram

PCB Dimension