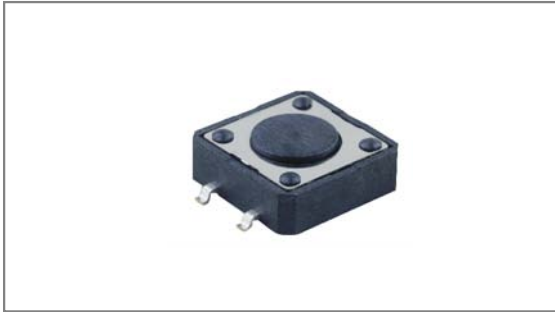


Tact switches 12×12

INT-1103SS Series 12×12mm with 3.5mm High Case, Surface mount type



- **Features** : Suitable for variety of controls
- **Applications** : Operating switches for all kinds of electronic equipments
- **Specifications** :

Rating	DC 12V 50mA
Contact resistance	100mΩ Max.
Travel (mm)	0.25+0.2/-0.1

► Part list

Part No.	Length (mm)	Operating force	Life	QTY per pack (Tape & reel)
INT-1103SS43A	4.3	180±50gf	100,000 Cycles Min.	650
INT-1103SS43B		250±50gf		

► Drawing

The drawing includes the following views and dimensions:

- Top View:** Shows a square component with a diameter of $\varnothing 6.70 \pm 0.1$ mm. The side length is 12.0 ± 0.1 mm. Contact positions are marked with A, B, C, and D. A distance of $4-1.0$ mm is indicated from the center to the contact points.
- Side View:** Shows the component's height of 3.50 mm and a maximum thickness of 0.5 mm. The base length is 15.0 ± 0.2 mm. The mounting pad length is 4.3 ± 0.2 mm.
- Bottom View:** Shows the component's width of 5.0 mm and a distance of $4-1.0$ mm from the center to the contact points.
- Circuit Diagram:** A schematic showing a switch with four terminals labeled A, B, C, and D. Terminal C is connected to terminal B, and terminal D is connected to terminal A.
- PCB Dimension:** Shows the component's footprint on a PCB with a width of 17.0 mm and a length of 11.0 mm. The mounting pad width is 6.6 mm and the pad length is 3.4 mm.