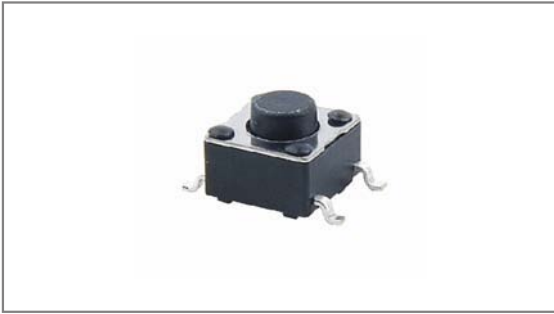


Tact switches 6×6

INT-1102SNT Series 6×6mm, Surface mount type



- ▶ **Features** : Suitable for high-density mounting
- ▶ **Applications** : Operating switches for all kinds of electronic equipments
- ▶ **Specifications** :

Rating	DC 12V 50mA
Contact resistance	100mΩ Max.
Travel (mm)	0.25+0.2/-0.1

▶ Part list

Part No.				Length (mm)	Operating force		Pitch (mm)		Life	QTY per pack	
					A	B	P	Q		(Tape & reel)	(Tube)
INT-1102SNT43AP	INT-1102SNT43BP	INT-1102SNT43AQ	INT-1102SNT43BQ	4.3	160±50gf	250±50gf	9.0	10.2	100,000 Cycles Min.	1K (1.2K)	90
INT-1102SNT50AP	INT-1102SNT50BP	INT-1102SNT50AQ	INT-1102SNT50BQ	5.0							
INT-1102SNT60AP	INT-1102SNT60BP	INT-1102SNT60AQ	INT-1102SNT60BQ	6.0							
INT-1102SNT70AP	INT-1102SNT70BP	INT-1102SNT70AQ	INT-1102SNT70BQ	7.0							
INT-1102SNT73AP	INT-1102SNT73BP	INT-1102SNT73AQ	INT-1102SNT73BQ	7.3							
INT-1102SNT75AP	INT-1102SNT75BP	INT-1102SNT75AQ	INT-1102SNT75BQ	7.5							
INT-1102SNT80AP	INT-1102SNT80BP	INT-1102SNT80AQ	INT-1102SNT80BQ	8.0							
INT-1102SNT85AP	INT-1102SNT85BP	INT-1102SNT85AQ	INT-1102SNT85BQ	8.5							
INT-1102SNT90AP	INT-1102SNT90BP	INT-1102SNT90AQ	INT-1102SNT90BQ	9.0							
INT-1102SNT95AP	INT-1102SNT95BP	INT-1102SNT95AQ	INT-1102SNT95BQ	9.5							
INT-1102SNT11AP	INT-1102SNT11BP	INT-1102SNT11AQ	INT-1102SNT11BQ	11.0							
INT-1102SNT12AP	INT-1102SNT12BP	INT-1102SNT12AQ	INT-1102SNT12BQ	12.0							
INT-1102SNT125AP	INT-1102SNT125BP	INT-1102SNT125AQ	INT-1102SNT125BQ	12.5							
INT-1102SNT13AP	INT-1102SNT13BP	INT-1102SNT13AQ	INT-1102SNT13BQ	13.0							
INT-1102SNT135AP	INT-1102SNT135BP	INT-1102SNT135AQ	INT-1102SNT135BQ	13.5							
INT-1102SNT17AP	INT-1102SNT17BP	INT-1102SNT17AQ	INT-1102SNT17BQ	17.0							

* Long life (1KK cycles) is available and part numbers in long life change to INT-1102SNT43APL~INT-1102SNT17APL.

▶ Drawing

Top view dimensions: 6.0±0.1, 4.5, 4±0.7, 5.0±0.1

Side view dimensions: 0.5 MAX, Ø3.5±0.1, 3.6, L±0.2, P±0.2

Detail view dimensions: 4±0.7, 4.5

Circuit diagram

PCB Dimension

Dimensions: 5.9, 3.1, 6.5, 11.5, 4.5

Tube for 4.3~13mm long with a pitch of 9.0mm

Tube for 13.5~17mm long with a pitch of 9.0mm and 10.2mm